

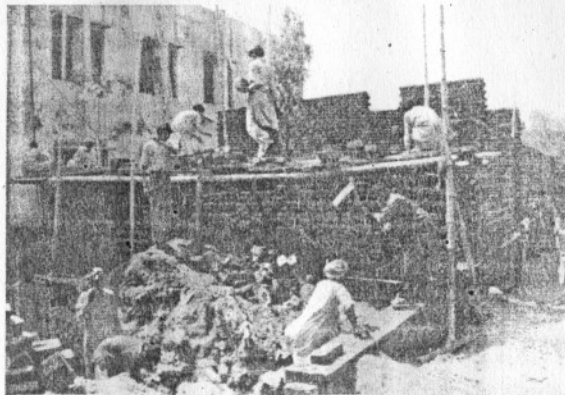
Lahore The Nation 24.3.02

Reaching out for excellence

S.A. KIRMANI visits Government Central Model School that is a mark of excellence in imparting quality education to students with its rich history



The Governor of the Punjab visiting the school



Work on new block in progress

own. The new government has now shown interest in the affairs of the school. The new Board includes well known people like Dr Sajjad Anwar, Dr Rashid Latif, Dr Ch Muhammad Iqbal, Engr Iftikhar Rashid and Ch Riaz Ahmed. The new Board has taken some revolutionary steps to streamline the affairs. The last meeting of the Board was chaired by the Governor himself. The Governor immediately sanctioned

Rs 3 million for the construction of a new building. He was much disturbed to see the large number of students in the classes. Every class has 12 sections and each section has nearly 80 students. Overall nearly 7,000 students study in the school. Presently there is one computer lab in the school having only 10 computers. The Governor promised that funds would be provided to establish two much bigger labs. The details of the steps

have not been released to the press yet but the concerned officials disclosed some measures.

The English medium classes would start in class-1 and class 6th with effect from 1-4-2002 with the coming of new admissions. The students in the new class-1 would not be more than 40 per section and in class 6th not more than 50. The school management has been empowered to employ competent staff on contract basis especially for the Junior Section.

The Board has approved a scheme to give incentive to the teachers showing excellent results in SSC examination. Teacher whose student would secure 1st position in Board would get Rs 20,000. Teacher whose student would secure 2nd position in the board would be given Rs 15,000. Teacher whose students would secure 3rd position in the board would be honoured with Rs 10,000. Subject teacher showing 100 per cent result in SSC Examination would be given cash award ranging from Rs 2,000 to Rs 4,000. Head of the institution would be awarded cash award of Rs 30,000 if student/students of the school secured 1st, 2nd or 3rd positions in the board or the school showed 75 per cent result on the basis of admission in Class-IX.

The board has allowed shifting of teachers working in regular BS-17 and 18 belonging to Nationalised or provincialised cadre because they are getting very high salaries considering it as a financial burden on the school budget and sources. Their services can be returned to the department for further adjustments.

The proposal for the investment of Rs 2.5 crore out of student fund, in a scheduled bank as fixed deposit for regular monthly income has been approved. Other school funds lying in PLS accounts may be deposited in day to day interest

scheme.

Enhancement of rates in the fee structure with effect from April 1, 2002 has been approved by the Board in view of the increase in expenditure on salaries due to introduction of New Pay Scales. The reaction of the parents and old students in this regard has yet to come up.

The present school administration run by Senior Head Master Ch Akram Ali is aware of the demands and challenges of the new century. They have taken a number of initiatives to improve the working of the institution. They have been making efforts to meet the budget deficit through donations. This donation culture has a lot of drawbacks and needs to be streamlined. This management has constructed two cafeterias in the school. One is for the students and the other is for teachers. 40 per cent of the material used in the construction was acquired from the crumbled and demolished buildings structure that was not in use. A bookshop and fruit shop has also been constructed. All this was done by using the money of donations. The school needs expansion. The management has proposed that one of the schools in the locality nearby that are not working successfully should be handed over to the Central Model school. Ch Akram talking to this scribe suggested that Salim Model School, Govt Khazana Gate School or the Islamia High School Bhati Gate should be handed over to them. He pointed out that Central Model Ratigan Road was run by them for some time before it was separated. Ch Akram said that he has a vision to see the school regain its past glory. Central Model School has produced many luminaries that are serving the country in different fields. To mention a few, Malik Miraj Khalid, Dr Nasim Hassan Shah, Dr Anwar Sajjad, Wasim Hassan Raja and Dr Mumtaz Hassan all studied in this school. The school has contributed a lot in the field of education. It is now a part of the city heritage which must be preserved at all costs. The best that can be done in this regard is to ensure that the school continues to serve and remains one of the best institutions of the province.

— Pictures by Nawaz Alam

Government Central Model School known for its high standard of education has been

serving the people of Lahore since 1883. It has become a part of the heritage of this city. The school that had its ups and downs in the last two centuries has now grown into a mature and big institution that can serve as the role model for other institutions of the country.

The recent interest shown by the Governor Punjab Khalid Maqbool in the affairs of the school will hopefully give it direly needed help. The Governor paid a visit to the school recently and also chaired a meeting of its Board of Governors. He gave certain directions that are expected to streamline the affairs of the school beside modernising its structure.

Whereas the schools in public sector suffered a decline in the standard of education and the buildings were allowed to decay, this school over the years was able to maintain its educational standard. This was partly due to the teaching staff and the Head

Masters of the school that served the school with dedication and partly due to the interest of the old students whose interest in the well being of their alma mater did not wane over the years. The old students have been and still are helping the school administration in different ways so that the old traditions are not lost and the institution prospers in its service. Central Model School was given autonomous status in 1991 and is the only educational institution of this grade that has been granted autonomy.

But this did not have any negative impact and the process of progress continued but at a slow pace. Reportedly the government grant was reduced twice by 10 per cent. At present, the school receives a grant of Rs 13.1 million whereas the annual expenditure is around Rs 21.8 million. The school administration meets all these expenditures from donations that it collects from the parents of students usually at the time of admissions and the help from philanthropists who are mostly old students. For the last two and a half years there was no Board of Governors and the school administration continued to take decisions and continue painstakingly on its