

When the people of Lahore started moving out of the traditional

boundaries in the era of emperor Hamayun, they formed colonies that became famous because of the castes and occupations of their inhabitants. The city gradually expanded in the southern, eastern and south-eastern dimensions.

Ayiesha Uzair gives an account of old localities of the city

The civilization and population of Lahore has gone through an evolutionary process over the years.

When the people of Lahore started to move out of the traditional boundaries in the era of emperor Hamayun, they formed colonies that became famous because of the casts and occupations of their inhabitants. The city gradually expanded in the southern, eastern and south-eastern dimensions.

Mohalla Pir Aziz Mozang (famous as Mouza Mozang): This locality was on the outskirts of old Lahore. A spiritual leader Pir Aziz Mozang came from Kabul to establish this and resided here himself for quite some time followed by his children.

From the old localities

Mozang is one of the sub-casts of Moguls. When the adjacent Mohalla Langar Khan devastated, Balochs also came in this colony and both formed a joint alliance to save themselves from the invaders. Then the Arains came in this colony along with other casts that reduced the influence of Moguls considerably. During the tenure of Raja Ranjeet Singh, Balochs grew in majority. Abdullah Baloch was a known spiritual leader and had many followers. Sardar Khan Baloch was another influential, a Mosque in his memory still exists in the area. In the following years, Mozang has developed into a full fledged locality of rich and famous.

Basti Kot Abdullah Shah

This was established by Abdullah Shah Baloch with houses of baked bricks and a boundary wall.

Qila Mehr Madho

This was established by Murad Buksh alias Madho Arain whose son Nizam-ud-Din was famous as a contractor.

Qila Mehra

This colony was established by the settlers (arains) and a carpenter named Mehra was the first to reside here, hence, the colony was named after him.

Tajpura

This colony was established by a spiritual leader Taja and his grave still has been in this colonies since then.

Madhar

This was named after a sub-cast (Madhar) of Arains and they initiated joint efforts to make it worth living.

Bhond pura

This colony was established during the era of British on

the south-eastern side of Lahore. A person Kamma alias Bhonde came to reside here first of all so the colony became famous after his name. Many renowned literary personalities of that time used to live in this colony including Siraj-ud-Din, Abdullah Shah Qadri, Mufti Ghulam Muhammad, Mian Sawan Shah, Mufti Ghulam Sarwar and Mian Farid.

Mauj Darya Bukhari

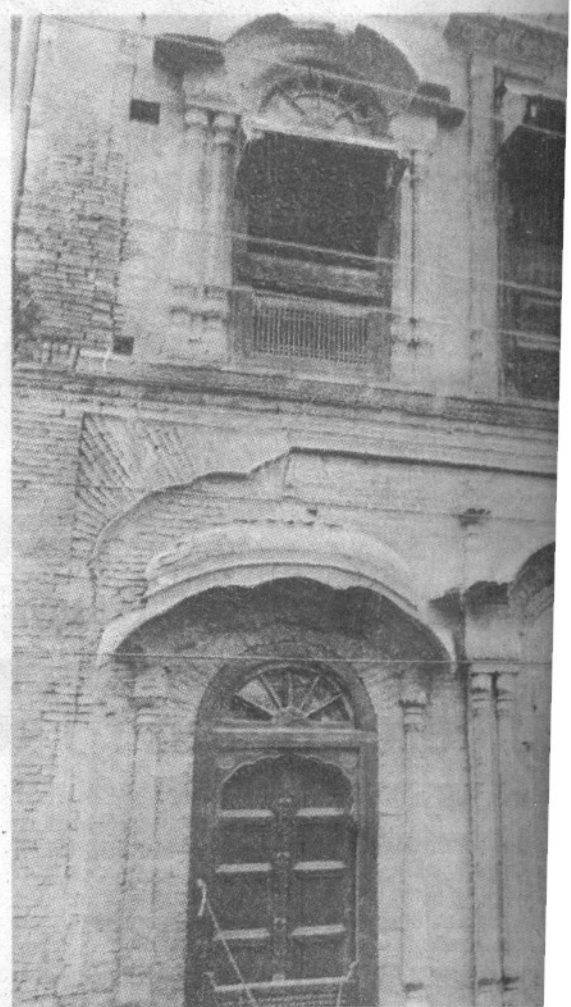
This colony was adjacent to the moholla Langar Khan, currently Macleod road. Syed Miran Shah Bukhari alias Mauj Darya resided here in the era of King Akbar. It was also called the mohalla of elder woman who was the wife of Mauj Darya. He was a very spiritual and religious person. The king had also given him Rs. 200,000 to establish a living and was also given land in Batala. This colony continued to be a hub of activity till the very end of Chughtai era and faced devastation when the Sikhs invaded Lahore. The tomb of Mauj Darya was also in this locality. Some of his children reside in Lahore while others in Batala.

Syed Chiragh Shah Gillani

This was towards the east of Mohalla Mauj Darya and was the residence of Syeds and Gillanis. This was established during the era of Shah Jahan and continued to exist till a very long time but faced extinction because of mismanagement, neglect and constant invasions. The tomb and Mosque of Syed Chiragh Shah were there. The Mosque went in government control while the colony came under the area on which civil courts are established now.

Daula Wari

It was established by a



land-lord named Daula whose sub-cast was Wari. Syed Abdul Razzaq Makki, one of the followers of Syed Mauj Darya, first of all resided here. This continued to exist till the last days of Chughtai sultanate. This was saved from the wrath of invaders because a spiritual leader, Haji Muhammad Saeed, had his home here and he was respected by friends and foes alike. After his death, this colony could not avoid devastation from Gujjar Singh. This was the area around Nila Gumbad in Anarkali in modern times.

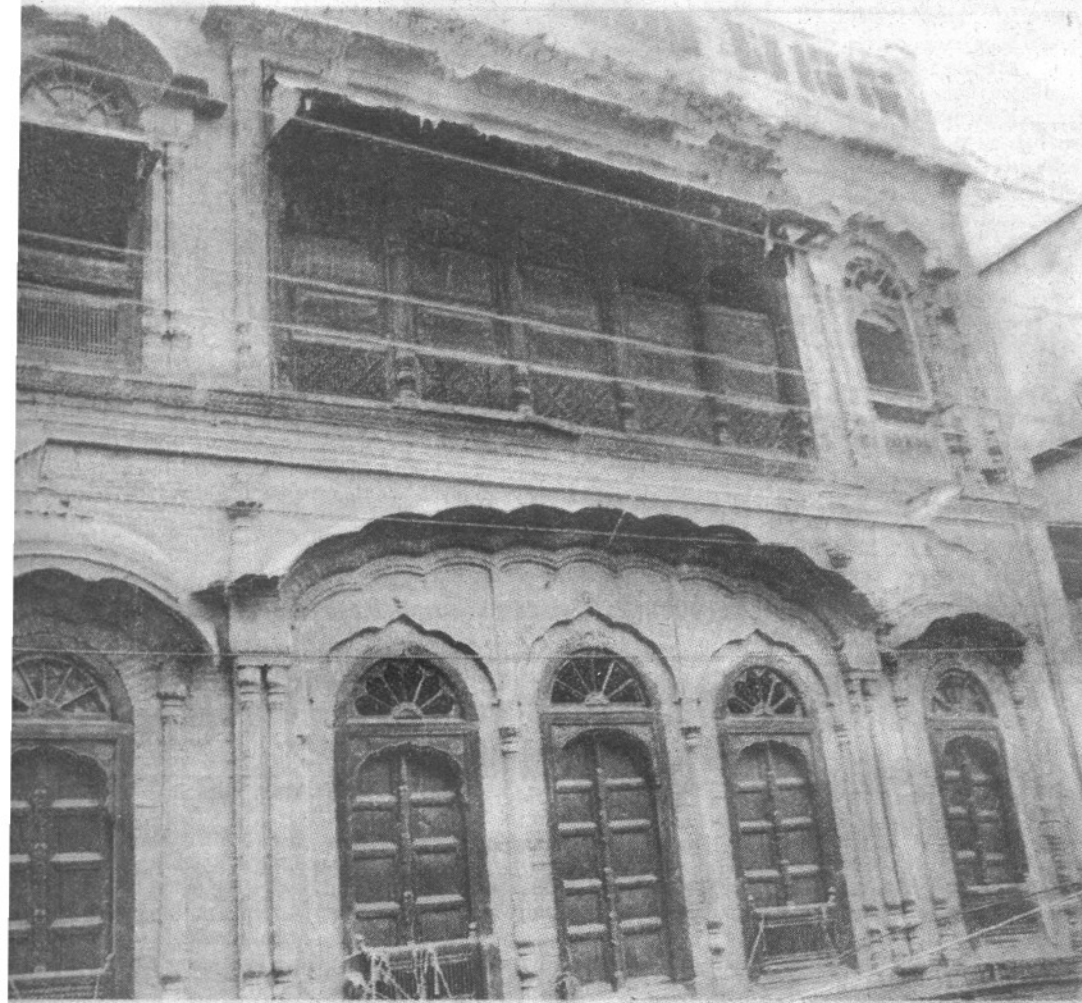
Colony Syed Sharif

This colony was on Bhati gate and its boundary went up-to the pre-district courts. Sharif the founder, was a man and had many followers. During the reign of Ranjeet Singh, when he was felt to expand the city, all the buildings were demolished and a plain ground was made here. The foundation of buildings can still be seen in the outer ground of

Lakhi Mohalla

This famous locality

Localities of Lahore



Jāt pura

This was near Mozang and people of Jat cast were the residents. They vacated this after the Khojas were conquered and fled with their precious belongings.

Mohalla Miani

This is the modern day Miani sahib graveyard. During the tenure of Shah Jahan, Sheikh Tahir Qadri came from Sarhand to live here. As he was a noble man, hence, the number of his followers continued to increase which resulted in the establishment of a large colony. Sheikh Tahir established a madrasa here where he used to teach Fiqah, Hadeeth and Tafseer to the students free of cost. After his death in 1040, invaders subjected this locality to ruthless attacks, resulting in its evacuation. The buildings were also chopped off and set on fire. The generation coming after established a graveyard here that has gradually risen to be the biggest of Modern Lahore.

Dai Anga

This was established by a respectable lady of that era named Anga. This was a place with a much secured living as the residents gave this a special attention. This the same place where the Railway workshop was established later. No other identity of this colony happens to remain any more.

Mohalla Syed Sar

This was adjacent to Garhi Shahu and housed the elites and Syeds, the very purpose behind its name Syed Sar.

Mughal pura

This was the most glamorous and modern locality of that time in Lahore. The officials belonging to Punjab government used to live here. It was first of all invaded by Ahmed Shah Durrani of Kabul and then by Sikhs thrice. During the modern time, this locality managed to refurbish itself and expanded to worthwhile locales.

Colony Syed Sharaf Shah

This colony was outside the Bhati gate and its boundaries went up-to the present day district courts. Shah Sharaf, the founder, was a learned man and had many followers. During the reign of Raja Ranjeet Singh, when the need was felt to expand the locality, all the buildings were razed off and a plain ground was made here. The foundations of those buildings can still be seen in the outer ground of Bhati gate.

Lakhi Mohalla

This famous locality was on

the outer boundaries of main Lahore of that time. It was the home for the rich and famous and that is evident from its name Lakhi which means millionaire. This is the area where these days hall road and a church building is there on Mall road.

Shah Badar

This was near the Gillani mohalla and was established by Shah Badar-ud-Din Gillani, a spiritual and religious man. He encouraged his followers and faithful to come and reside here. Today, there is no

mention of this colony anywhere.

Khoji mohalla

This was also a colony of rich people and very respectable people belonging to Khoja cast resided here who pursued trading as their occupation. When the Sikhs started invading Lahore, the residents of this colony kept getting away by offering them money in rich bucks but finally had to resort to fighting. They did win a couple of times but were finally tamed by the Sikhs.